




# Back to School Night

Franklin Middle School  
September 13, 2021



# Working Agreements

 A black square icon with a white microphone symbol and a red diagonal slash over it, with the word "Unmute" written in white below the icon.	Microphones will remain muted until the end
 A yellow hand icon with fingers spread, set against a black square background.	Use the <b>“Raise Hand”</b> icon to speak
 A white question mark icon inside a teal circle.	Questions can be submitted through the online form

# Our Outcomes for Tonight

1. Welcome families to the school community and foster a school-family partnership for the 2021-22 school year
2. Provide timely information about the curriculum, daily schedule, learning expectations, school routines & procedures, family resources and supports to help your child be successful
3. Learn more about your child's classroom experiences from teachers and school staff members



# Introductions



# Join the Franklin MS PTA!



The first meeting is on September 29 at 6:30 PM

<https://fms.ptboard.com/>

# Beginning of the School Year Forms

Required Form	Information
<a href="#"><u>Emergency Care Form</u></a>	Form required for all students. Complete via <a href="#"><u>WeCare</u></a>
<a href="#"><u>Health Information Form</u></a>	Complete via <a href="#"><u>WeCare*</u></a> .
<a href="#"><u>Digital Tools Consent Form</u></a> <sup>cf</sup>	Review software and <a href="#"><u>tools used at Franklin here</u></a> and complete consent form.
<a href="#"><u>After School Program Registration Form</u></a> <sup>cf</sup>	All students complete this regardless of intent to participate.

[This list can be found on our School Opening Information page](#)

# Teacher Welcome Messages

## Electives

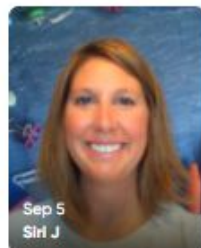
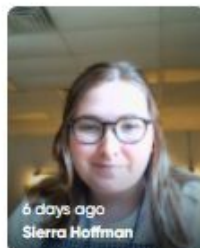
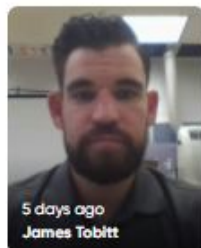
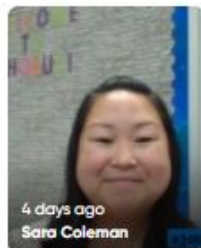
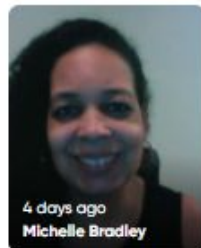
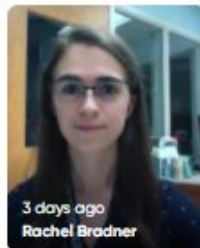
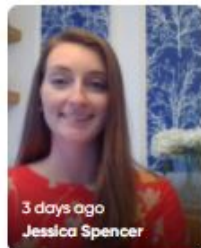
Learn about our talented, artistic, technological, and musical teachers here at Franklin!

This Topic is view only ⓘ

### 11 Responses

86 views · [6.3 hours](#) of engagement

🔍 Search Responses



[Link to Welcome Messages](#)

# Teacher Welcome Messages

## Electives



Anne Baker

 Join with Microsoft

 Join with Google

Join with your [guest password](#) 

By continuing, you agree to [Flipgrid's Terms of Use](#) and [Privacy Policy](#).

Be sure to use the the  
“Guest Password”  
access link

The password is  
“Franklin”  
(Case sensitive)



# Franklin Middle School

## 2021-2022 Bell Schedule



First Bell 7:25 AM			
Blue	Time	Gray	Minutes
1	7:30 AM-9:00 AM	2	90
3	9:05 AM-10:35 AM	4 (FT)	90
5	10:40 AM-12:40 PM	6	120
7	12:45 PM-2:15 PM	8	90

[Link to Bell Schedule and Blue/Gray Calendar](#)

# Blue & Gray Days at Franklin MS

## Franklin Middle School 2021-2022 Bell Schedule



First Bell 7:25 AM			
Blue	Time	Gray	Minutes
1	7:30 AM-9:00 AM	2	90
3	9:05 AM-10:35 AM	4 (FT)	90
5	10:40 AM-12:40 PM	6	120
7	12:45 PM-2:15 PM	8	90

M	T	W	T	F
<sup>2</sup> B	<sup>3</sup> A	<sup>4</sup> B	<sup>5</sup> A	<sup>6</sup> B
<sup>9</sup> A	<sup>10</sup> B	<sup>11</sup> A	<sup>12</sup> B	<sup>13</sup> A

# 2021-2022 Blue/Gray School Calendar

August 2021						
Su	M	Tu	W	Th	Fr	Sa
1	2	3	4	5	6	7
8	9	10	11	12	13	14
15	16	17	18	19	20	21
22	F	24	25	26	27	28
29	30	31				

September 2021						
Su	M	Tu	W	Th	Fr	Sa
			1	2	H	4
5	H	O	8	9	10	11
12	13	14	15	O	17	18
19	20	21	22	23	24	25
26	27	28	29	30		

October 2021						
Su	M	Tu	W	Th	Fr	Sa
					1	2
3	4	5	6	7	8	9
10	SP	12	13	14	15	16
17	18	19	20	21	22	23
24	25	26	27	28	QE	30
31						

November 2021						
Su	M	Tu	W	Th	Fr	Sa
		TW	TW	3	O	5
7	8	9	10	ER	12	13
14	15	16	17	18	19	20
21	22	23	H	H	H	27
28	29	30				

December 2021						
Su	M	Tu	W	Th	Fr	Sa
			1	2	3	4
5	6	7	O	9	10	11
12	13	14	15	16	17	18
19	H	H	H	H	H	25
26	H	H	H	H	H	

January 2022						
Su	M	Tu	W	Th	Fr	Sa
						1
2	3	4	5	O	O	8
9	10	11	12	13	14	15
16	H	18	O	QE	TW	22
23	SD	25	26	27	28	29
30	31					

February 2022						
Su	M	Tu	W	Th	Fr	Sa
		O	2	3	4	5
6	7	8	9	10	11	12
13	14	15	16	17	18	19
20	H	22	23	24	25	26
27	28					

March 2022						
Su	M	Tu	W	Th	Fr	Sa
		1	2	ER	SD	5
6	7	8	9	10	11	12
13	14	15	16	17	18	19
20	21	22	23	24	25	26
27	28	29	30	QE		

April 2022						
Su	M	Tu	W	Th	Fr	Sa
					TW	2
3	H	H	H	H	H	9
10	11	12	13	14	O	16
17	18	19	20	21	O	23
24	25	26	27	28	29	30

May 2022						
Su	M	Tu	W	Th	Fr	Sa
1	2	O	4	5	6	7
8	9	10	11	12	13	14
15	16	17	18	19	20	21
22	23	24	25	26	27	28
29	H	31				

June 2022						
Su	M	Tu	W	Th	Fr	Sa
			1	2	3	4
5	6	7	8	9	YE	11
12	TW	14	15	16	17	18
19	H	21	22	23	24	25
26	27	28	29	30		

July 2022						
Su	M	Tu	W	Th	Fr	Sa
					1	2
3	4	5	6	7	8	9
10	11	12	13	14	15	16
17	18	19	20	21	22	23
24	25	26	27	28	29	30



Lunch Schedule	
A Lunch:	<b>Lunch: 10:40 AM-11:10 AM</b> Instructional Time-11:10-12:40 (90 min)
B Lunch:	Instructional Time: 10:40-11:10 (30 min) <b>Lunch: 11:10-11:40</b> Instructional Time: 11:40-12:40 (60 min)
C Lunch:	Instructional Time: 10:40-11:40 (60 min) <b>Lunch: 11:40-12:10</b> Instructional Time: 12:10-12:40 (30)
D Lunch:	Instructional Time-10:40-12:10 (90 min) <b>Lunch: 12:10-12:40</b>

7 <sup>th</sup> Grade	Falcon Time Schedule
Student break	9:05-9:35 AM (30 min)
SEL/P2	9:35-10:05 AM (30 min)
Work time/Office hours	10:05-10:35 AM (30min)

8 <sup>th</sup> Grade	Falcon Time Schedule
SEL/P2	9:05-9:35 AM (30 min)
Work time/Office hours	9:35-10:05 AM (30 min)
Student break	10:05-10:35 AM (30min)

# Health & Safety Protocols at FMS



- Layered Prevention Strategies
- Communication
- Support



# Layered Prevention Strategies



- Universal mask requirements
- Vaccination requirements for staff
- Utilizing outdoor spaces for lunch as much as possible
- Utilizing outdoor space for instruction
- Using effective disinfectant and sanitizing products to clean our facilities (including buses) every day
- Following CDC recommendations to utilize mechanical ventilation systems with outside air
- Ensuring students are frequently washing or sanitizing hands throughout the day



# Key Terms

**Pause:** A pause to in-person instruction is a short-term **safety measure** used by FCPS and the health department to allow time to investigate and determine the safest way to address a positive case within the school community.

**Close Contact:** A close contact is any person, regardless of vaccination status, who is within 6 feet of a COVID-19 positive individual for a cumulative total of 15 minutes or more over a 24 hour period. The Centers for Disease Control and Prevention (CDC) **K-12 Exception** indicates that students will not be identified as close contacts if they are at least 3 feet apart and are consistently wearing masks in the classroom setting. Adults are not included in this exception.

**Quarantine:** When a student is identified as a close contact, there are two things that may occur as a result:

- **Not fully vaccinated students** who are identified as a close contact with someone with COVID-19 must remain home for 14 days after their last exposure. The student will be notified of their return date.
- **Fully vaccinated students** must remain home until your vaccination status is verified. Upon verification of vaccination status, and if the student/staff is asymptomatic, they may return to in-person learning and activities once notified of their return date.



# Counseling Team



Mrs. Tammi Bailey-Case

- Champions (7th)
- Navigators (8th)



Mrs. Kathy Hudson

- Innovators (8th)
- Visionaries (8th)



Mrs. Joni Fraundorfer

- All-Stars (7th)
- Trailblazers (7th)



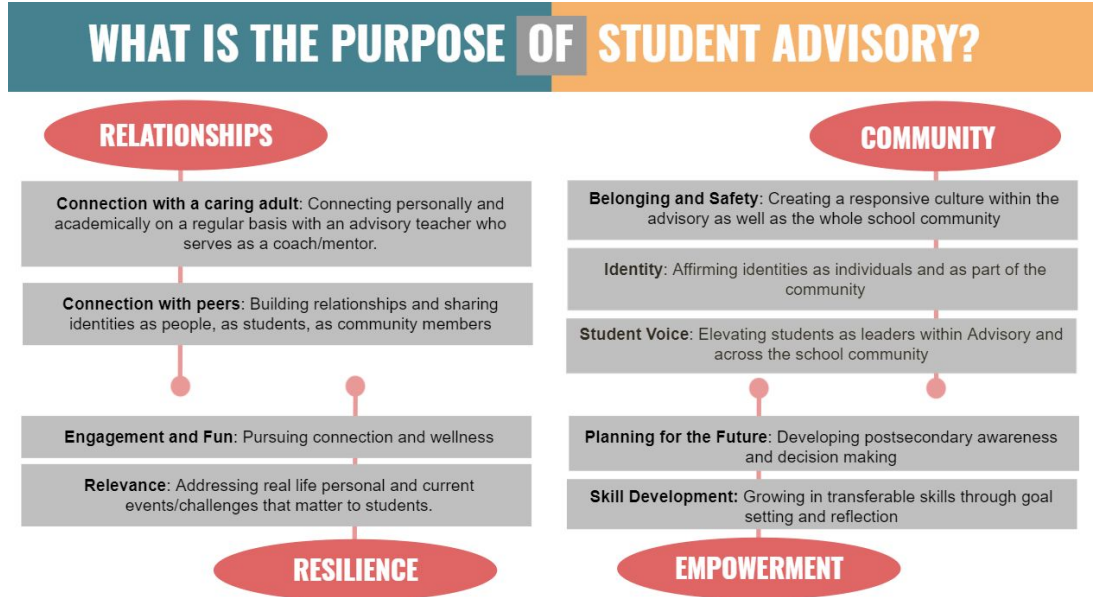
## 2021-2022 Franklin Middle School Student Support Teams

STUDENT'S COUNSELOR				STUDENT'S ADMINISTRATOR	
Student's Team	Counselor's Name	Email	Phone Number	Administrator's Name	Administrator's Email
7th Grade - All Stars	Joni Fraundorfer	<a href="mailto:JFraundorfer@fcps.edu">JFraundorfer@fcps.edu</a>	703-904-5132	Rob Gibbs	<a href="mailto:RAGibb@fcps.edu">RAGibb@fcps.edu</a>
7th Grade - Trailblazers	Joni Fraundorfer	<a href="mailto:JFraundorfer@fcps.edu">JFraundorfer@fcps.edu</a>	703-904-5132	Rob Gibbs	<a href="mailto:RAGibb@fcps.edu">RAGibb@fcps.edu</a>
7th Grade - Champions	Tammi Bailey-Case	<a href="mailto:TLBaileycase@fcps.edu">TLBaileycase@fcps.edu</a>	703-904-5152	Rob Gibbs	<a href="mailto:RAGibb@fcps.edu">RAGibb@fcps.edu</a>
8th Grade - Navigators	Tammi Bailey-Case	<a href="mailto:TLBaileycase@fcps.edu">TLBaileycase@fcps.edu</a>	703-904-5152	Forrest Reid	<a href="mailto:FYReid@fcps.edu">FYReid@fcps.edu</a>
8th Grade - Innovators	Kathy Hudson	<a href="mailto:KAHudson1@fcps.edu">KAHudson1@fcps.edu</a>	703-904-5154	Forrest Reid	<a href="mailto:FYReid@fcps.edu">FYReid@fcps.edu</a>
8th Grade - Visionaries	Kathy Hudson	<a href="mailto:KAHudson1@fcps.edu">KAHudson1@fcps.edu</a>	703-904-5154	Forrest Reid	<a href="mailto:FYReid@fcps.edu">FYReid@fcps.edu</a>

# Falcon Time (student advisory period)

3 components of Falcon Time:

- Break (30 min)
- Social and Emotional Learning (SEL) lessons and Positivity Project (30 min)
- Office hours, intervention and work time (30 min)



# Technology Integration

- FCPSOn moves into the 6th year at FMS.
- Technology used to amplify and support instruction.
- Students were issued laptops and chargers during first week of school. Students will take their laptop home every day for charging overnight.
- Highly recommend backpack with laptop pocket.
- For technology support, parents and students can [submit a ticket online](#).

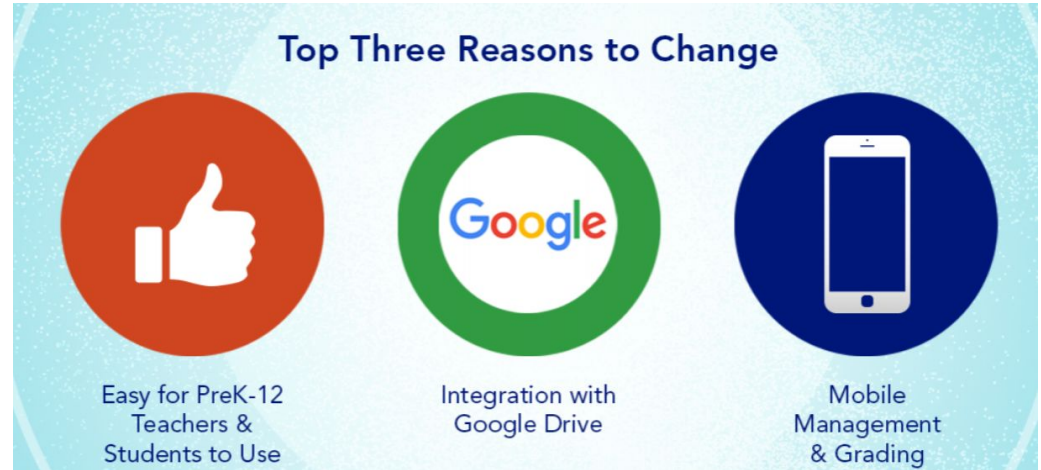


# Schoology

## Our New Learning Management System



Top Three Reasons to Change

The graphic shows three circular icons on a light blue background. The first is a red circle with a white thumbs-up icon. The second is a green circle with the Google logo. The third is a dark blue circle with a white smartphone icon.

- Easy for PreK-12 Teachers & Students to Use
- Integration with Google Drive
- Mobile Management & Grading

# Schoology

## Our New Learning Management System



- Schoology is replacing FCPS 24/7 and Google Classroom. All teachers will be using this program.
- Parents must have a SIS parentvue account to access their Schoology account.
- Information regarding getting a SIS Parentvue account can be found on our website and in the email communications.
- SIS ParentVUE is still the place to check overall grades for courses.
- [More Information about Schoology](#)



# Parent View in Schoology

This screenshot shows the Schoology interface from a parent's perspective. At the top, a blue navigation bar contains the Schoology logo and menu items: COURSES, GROUPS, and GRADE REPORT. A user indicator at the top right states "You are viewing as Jeffrey Littlepage". The main content area is titled "Student Activity - Enrollments" with a "Most Recent" sort option. The activity feed includes:

- A post from Gregory Harris (Homeroom 8: Mr. G Harris) with a message of encouragement and a video link from "Kid President".
- A post from Gregory Harris (Yearbook 2020) about capturing school moments.
- Grade reports for Jeffrey Littlepage: 12/12 for "What's the difference?", 79/100 for "Biomes Quiz", and 20/24 for "Poetry Reading".
- A submission record for "Weekly Worksheet 1".
- A grade report for Jeffrey Littlepage: 18/18 for "What is a Community Helper?".
- A post from Sonia Mendezina (West Bridge Middle School) about a digital citizenship pledge.

A "Play (K)" button is visible in the bottom left corner.

This screenshot shows the Schoology interface from a parent's perspective, focusing on the "Recent Grades", "Overdue", and "Upcoming" sections. The user indicator at the top right shows "Jeffrey Littlepage".

- Recent Grades:** A table showing graded tests/quizzes (3) and graded discussions (4). Red callout bubbles with numbers 1 and 2 are placed over the "Graded tests/quizzes" and "Graded discussions" rows, respectively.
- Overdue:** A section for "WEDNESDAY, SEPTEMBER 4, 2019" listing "Problem Set 1" due on "FRIDAY, JULY 17, 2020".
- Upcoming:** A section for "FRIDAY, JULY 17, 2020" listing "Chapter 2 Questions" due at "11:59 pm".

# Return of Our Interdisciplinary Teams

## 7th Grade:

- All Stars
- Trailblazers
- Champions

## 8th Grade:

- Innovators
- Navigators
- Visionaries



- Teams provide the structure for students to make additional connections within the building.
- Each team is comprised of an English teacher, science teacher, social studies teacher, and counselor who work with a group of approximately 140 students.
- Math teachers will work with student across different teams.



# After School Activities



## The After-School Program Starts September 27th!

- 2:15 to 4:45 on Mondays, Wednesdays, and Thursdays.
  - *No meetings on holidays, early release days, or in inclement weather.*
- Students can get support from a teacher, join a club, play intramurals, or get homework help!
- Weekly activity lists will be emailed via News You Choose and can be found on Schoology.
- Activities are added as the year progresses. Be sure to check back periodically for updates!
- Please complete the [After School Program Registration Form](#)

## After-School Specifics

- The After-School Program is divided into two blocks:
  - 1st Block 2:40 - 3:40
    - Teacher support and homework help usually takes place during 1st block
  - 2nd Block 3:40 - 4:40
    - Students can stay during 2nd block to join other activities.

## Late Bus Information

- The bus leaves Franklin at 4:45. Late bus runs differ from the morning and afternoon runs. There are fewer buses and stops. Your child's late bus information can be found in SIS ParentVUE.

# Questions & Answers

